

# Deco Safe 5250

Formerly marketed as Tucana 5250



**BETTER**

Door: Ltd Lifetime    
 Hardware: 6 yr    
 Springs: 3 yr

- R-6.9 Thermal Rating
- Steel Construction
- 2" Sections
- 2 Colors + Custom Colors
- 4 Panel Designs
- 6 Window Designs

**Thermal Rating**

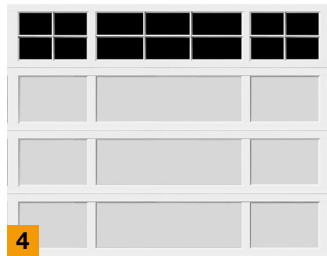
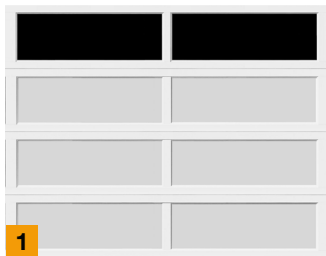
**Customizations**

**Low Maintenance**

**Luxury Level**

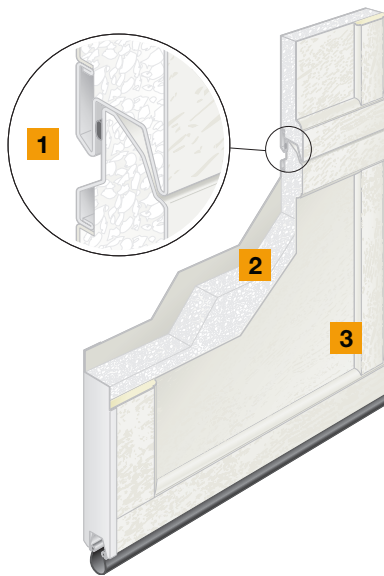
## PANEL DESIGN OPTIONS

- 1 Longwood
- 2 Sorrento
- 3 Sanford
- 4 Davenport



## BEAUTY, DURABILITY, SAFETY

The Hörmann Deco Safe 5250 offers the beauty of recessed panel design and unsurpassed safety of our FingerGuard™ pinch-resistant joints. The virtually maintenance-free Deco Safe doors feature a tough steel front and back with polystyrene core, giving an R value of 6.9. A wide range of standard designs is available to complement your home.



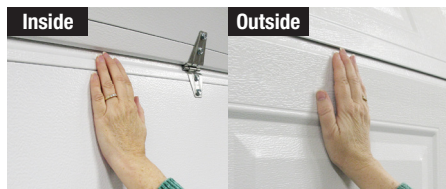
**Deep Tongue and Groove 1**  
 Section joints contribute to the door's excellent strength. Intermediate seals prevent air infiltration, which enhances the insulation properties.

**3-Layer Sandwich Construction 2**  
 Steel front and back construction with insulating polyurethane core increases energy savings and provides a very smooth and quiet operation.

**Well-defined Panel 3 Designs**  
 Recessed panel inlay designs with easy to clean Rainslope™ woodgrain texture, galvanized and finish painted steel provide years of trouble-free performance and beauty.

## Hörmann Innovations

### FingerGuard™ Pinch Resistant



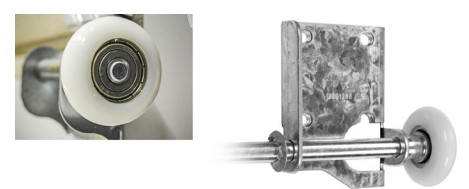
The FingerGuard™ section joints and hinges provide an air-tight seal and prevent finger injuries both inside and outside.

### Between Section & Side Seals



Factory installed between section weather seals and side seals offer maximum protection from the outside elements while further enhancing the insulation properties of a door.

### White 11 Ball Bearing Nylon Rollers



Hörmann nylon rollers feature 11 pre-lubed ball bearings encased in a high strength steel casing that provides a quiet ride and years of reliable service.

## COLOR OPTIONS

1 White  
2 Sandstone  
3 Galaxy Paint (Custom Color)

\* Color application method will be at the discretion of the manufacturer.

All colors shown as accurately as printing technology allows.



## WINDOW DESIGN OPTIONS

1  
2  
3  
4  
5  
6

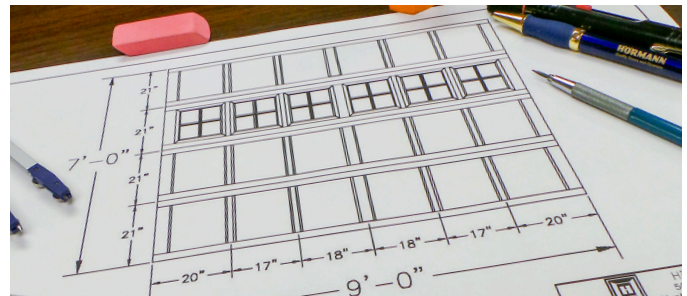
Non-insulated and insulated glasses are available along with solid door (no glass).

- 1 Glazed standard short
- 2 Glazed standard long
- 3 Glazed 2 pane
- 4 Glazed 3 pane
- 5 Glazed 4 pane
- 6 Glazed 6 pane



## MADE TO ORDER DESIGNS

Whether you are matching an existing recessed panel door or have a custom panel arrangement in mind, Hörmann can deliver the perfect look that you are looking for. Simply provide your Hörmann Authorized Dealer with the panel dimensions for your custom door and we will provide an engineering drawing for your approval.



**Call toll free**  
Eastern & Central US: 877.654.6762  
Western US: 800.522.2264  
Canada: 833.743.2443

**Contact**  
Email: [info@hormann.us](mailto:info@hormann.us)  
Website: [hormann.us](http://hormann.us)

AVAILABLE FROM:



PN 27777412



Follow us on social media

