



HD SERIES Model HDXL

Heavy-duty industrial rubber doors for extra-large equipment access

HÖRMANN

Big Equipment Needs Big Access Openings

Hörmann leads the way with custom designed, high-performance, rugged roll-up doors for extra-large openings. Introducing the model HDXL rubber door. Our engineering and field experience assures a custom-built, high-performance door system that delivers value, safety and peace-of-mind.

MODEL HDXL 55' W x 30' H



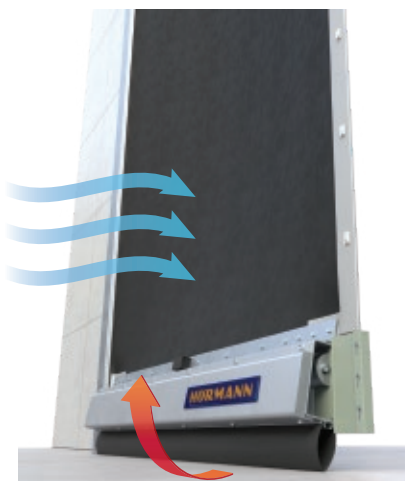
Hard-rock mining, oil and gas, hydroelectric, pulp & paper and waste management operations need heavy-duty extra-large doors for big equipment access into service shops, wash bays, loading and processing facilities and other related structures.

The extra-large, model HDXL rubber doors are available up to 47 feet wide or 45 feet high. Openings beyond these sizes may be possible but require extra consideration; contact us for larger doors.

Maintain reliable operation with this extremely durable door. A flexible rubber curtain withstands pressure differentials caused by wind and HVAC equipment on the extra-large door surface. All components of the HDXL9 are bigger, heavier and stronger than our other rubber door models: 6" guides instead of 5" guides, 8" x 6" steel tube for mounting instead of a mounting angle, and a heavier 8" high steel tube bottom bar construction further strengthened with ribbed aluminum extrusion reinforcements.

LED LITE-ADVANCE STANDARD ON ALL RUBBER DOORS

The LED Lite-Advance is a visual indicator, signaling approaching traffic that the door is open, closed or in motion. Lite-Advance comes in standard 5ft lengths of bright LED light strips which attach to the guide tracks or hood and are easy to install on new or existing door applications. Lites are solid red when the door is down, and solid green when completely open, increasing awareness which will reduce the likelihood of impact to the door, and minimize downtime.



HEAVY-DUTY PATENTED PIVOTING BOTTOM BAR

The HDXL features a patented pivoting bottom bar assembly which pivots when the curtain is exposed to high wind load or positive pressure. This clever design enables the door to easily open and close without binding in the guides or causing excessive wear on the curtain.

Equipment features

● = Standard
○ = Optional

Door Type	HDXL Sprung Drive Extra Large	
Suitable application	interior exterior	
Size Range		
Maximum opening width, depending on height (ft)	47	
Maximum opening height, depending on width (ft)	45	
Speed		
Maximum Opening Speed (in/s)	up to 12	
Maximum Closing Speed (in/s)	up to 12	
Headroom		
Minimum Headroom, doors up to 17 ft high (in)	55	
Minimum Headroom, doors over 17 ft high (in)	61	
Minimum Headroom, doors up to 45 ft high (in)	66	
Curtain Retention		
NEWGEN® Guide and Curtain Loks™	●	
Wind Load, door closed - 20 psf (958 Pa, 1.38 bar) or 88 mph (141 km/h)	●	
Weighted Bottom Bar, increased windload protection (standard on door width ≥ 12 ft)	●	
Curtain		
1/4 in (6 mm) thick SBR rubber	●	
1/4 in (6 mm) thick EPDM rubber	○	
1/4 in (6 mm) thick MSHA self-extinguishing rubber (Black only)	○	
Windows, 16 in x 16 in	○	
Thermal Insulation		
U-value	Imperial BTU/(h·ft²·F)	Metric W/(m²·K)
		Consult Factory
Drive System		
Direct Drive Operator, Springless	-	
Chain Drive Operator, Springless	-	
Chain Drive Operator, Counterbalance Springs, 50K cycles	●	
Chain Drive Operator, Counterbalance Springs, 100K or 200K cycles	-	
Power Supply, 3-phase 208 V to 575 V	●	
Power Supply, 1-phase 208 V to 240 V	○	
Emergency Manual Opening		
Chain hoist	●	
Hand crank	-	

Standard color rubber



RAL 9005 Jet Black

Special color rubber



RAL 5017 Traffic Blue



RAL 7037 Dusty Grey

Typical Applications

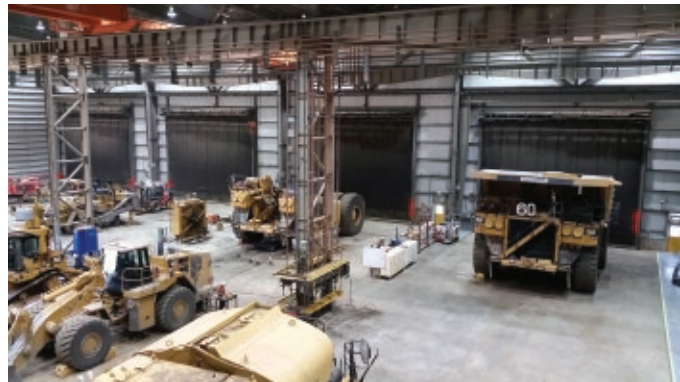
Industry, Mining & Energy
Pulp & Paper
Waste Management



Warranty

The chain drive sprung design includes our 5 and 2 warranty, ensuring reliable and dependable operation with:

- 5 years or 1,000,000 cycles on operators with VFD
- 2 years on all other mechanical components
- 2 years on electrical components



HÖRMANN NORTH AMERICA



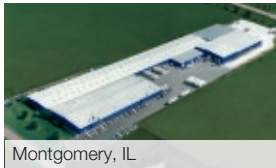
Sparta, TN - North American Headquarters / Sectional Doors

SIX PRODUCTION PLANTS, ONE FAMILY

As one of the world's leading manufacturers of door systems, we're committed to providing the best quality, value, and selection. Whether residential, commercial or industrial, we have the solutions you're looking for. Each Hörmann product gives you the perfect array of benefits and options to satisfy your customers.



Puyallup, WA



Montgomery, IL



Barrie, ON Canada



Burgettstown, PA



Imperial, PA

USA

Toll Free: 800.365.3667
Email: info@hormann.us
Website: hormann.us

Canada

Toll Free: 866.792.9968
Email: info@hormann.ca
Website: hormann.ca

Mexico

Toll Free: 52 (81) 8308 7481
Email: info@hormann.com.mx
Website: hormann.mx



AVAILABLE FROM:



Follow us on social media

