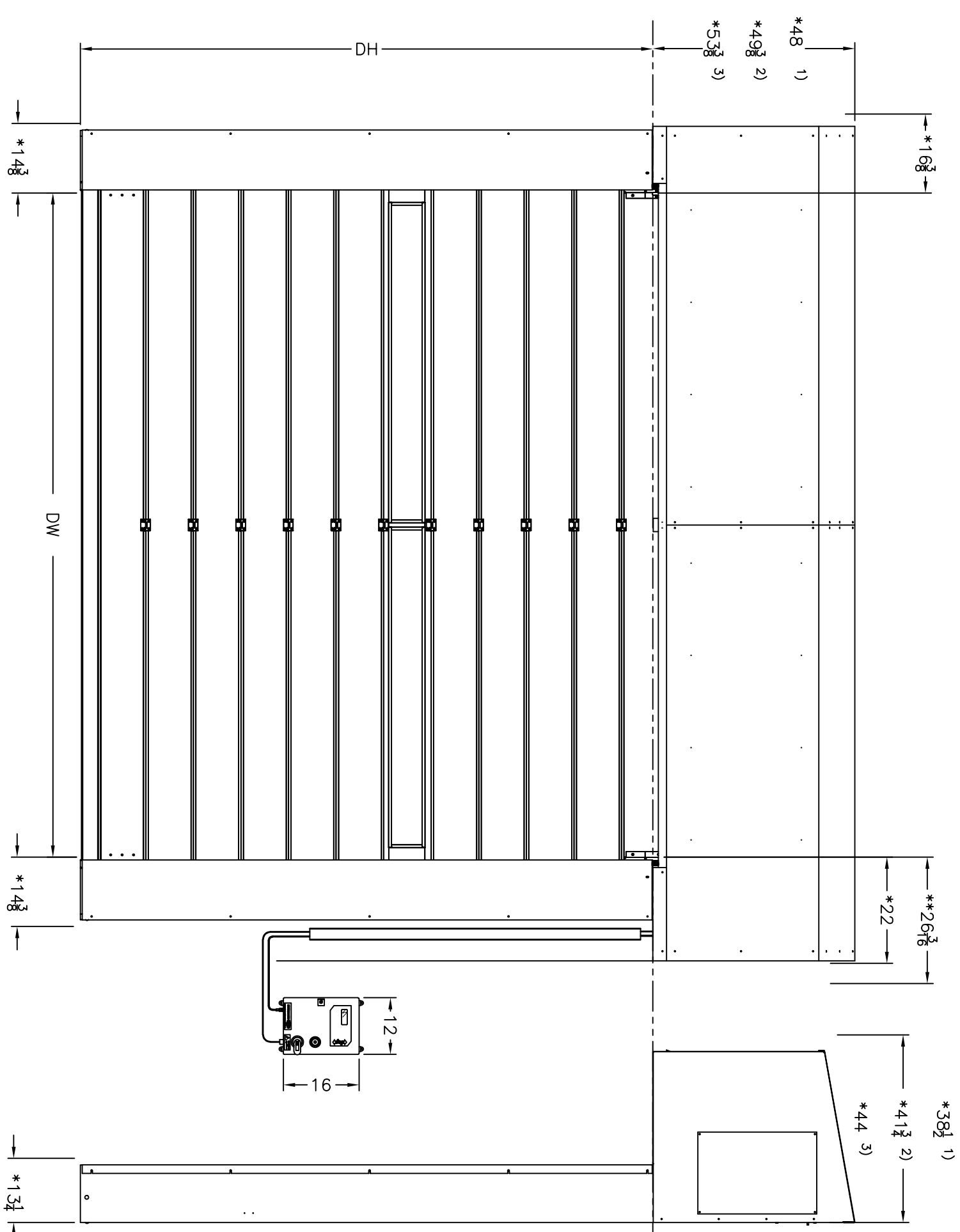
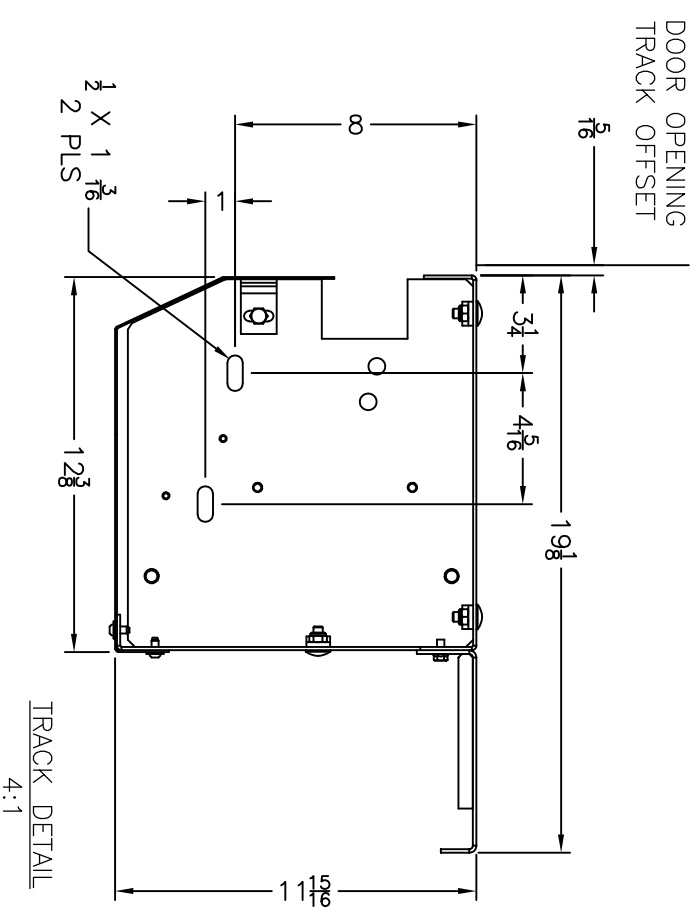


MODEL:	SPEED GUARDIAN 5000U-42 W/ SLOPE HD		
CUSTOMER:	-		
ADDRESS:	-		
CITY & STATE:	-		
JOB:	-		
LOCATION:	-		
COMPANY:	-		

SIZE:	DW=	DH=	
MOTOR LOCATION:	RIGHT	LEFT	
CONTROL BOX LOCATION:	RIGHT	LEFT	
VOLTAGE:	208V	230-240V	360-480V
WIRING:	HARD WIRED	SMART START	
VISION AREA:			
# OF VISION PANELS:	-	STARTING AT	-"
# OF PERFORATED PANELS:	-	STARTING AT	-"
OPTIONS:			
3 BUTTON PUSH STATION			-
INDUCTION LOOP			-
MOTION DETECTOR			-

NOTES:



ALL DIMENSIONS ARE IN INCHES.

*FITTING CLEARANCE.

**SPACE REQUIRED TO FIT AND DISMANTLE THE OPERATOR.

CONTROL BOX PROJECTION IS 6 INCHES.

DRAWING SHOWN RIGHT HAND, LEFT HAND OPPOSITE.

WE RESERVE THE RIGHT TO CHANGE SPECIFICATIONS WITHOUT NOTICE

DW ≤ 256"	DW > 256"
1) DH ≤ 177"	1) NA
2) DH > 177" - ≤ 216"	2) NA
3) DH > 216" - ≤ 256"	3) DH ≤ 192"



117 STARPOINTE BOULEVARD
BURGETTSTOWN, PA 15021-9506
PH: +1 (800) 365-3667 FAX: 724.385.9151
www.hormann.us

TITLE: HIGH PERFORMANCE DOOR SPECIFICATIONS	
MODEL: SG5000U-42 SL HOOD	PART #: -
DRAWING #:	PAPER SIZE: ANSI "B"
PAGE: 1 OF 1	SCALE: N/A
QTY: -	ENGINEER: GJB DRAWN: 7/20/2021