

MODEL: SPEED-MASTER 2600 L
 CUSTOMER: -
 ADDRESS: -
 CITY & STATE: -
 JOB: -
 LOCATION: -
 COMPANY: -

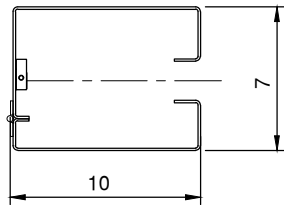
SIZE: DW= - DH= -
 MOTOR LOCATION: RIGHT LEFT
 CONTROL BOX LOCATION: RIGHT LEFT
 CONTROL BOX TYPE: 3PHASE
 VOLTAGE: 1 200-240V 360-480V

PANEL COLOR: BLUE ORANGE
 BLACK GREY
 VISION AREA: CLEAR PVC LOW TEMP PVC
 NONE

OPTIONS:
 1 BUTTON PUSH STATION -
 INDUCTION LOOP SYSTEM -
 RADAR MOTION SENSOR -

NOTES:

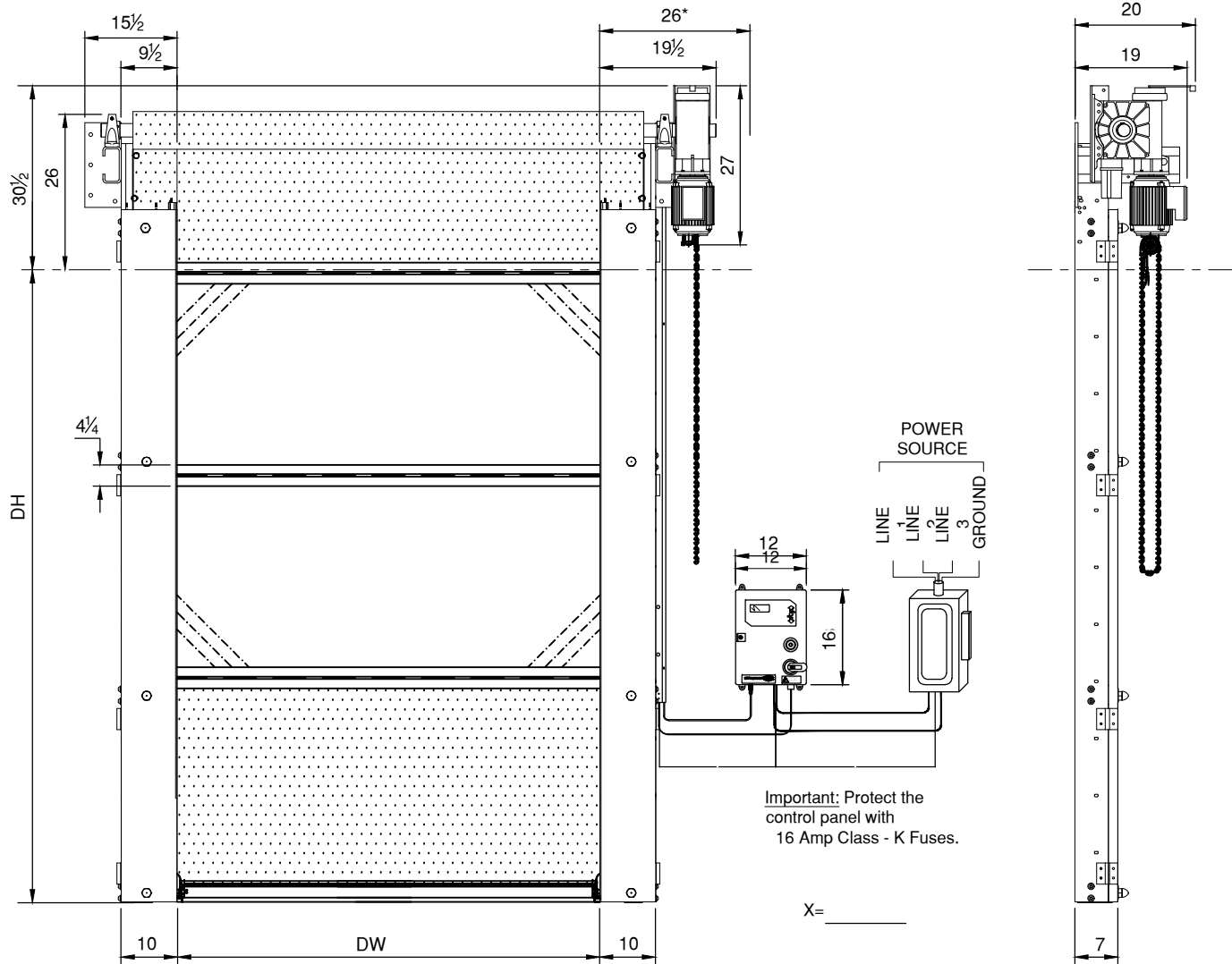
1.) STEP-UP TRANSFORMER SUPPLIED FOR 3PH SUPPLY VOLTAGES UNDER 460VAC.



TRACK DETAIL
3:1

ALL DIMENSIONS ARE IN INCHES.
 * NECESSARY SPACE REQUIREMENT FOR MAINTENANCE.
 CONTROL BOX PROJECTION IS 6 INCHES.
 DRAWING SHOWN RIGHT HAND, LEFT HAND OPPOSITE.

WE RESERVE THE RIGHT TO CHANGE SPECIFICATIONS WITHOUT NOTICE



Important: Protect the control panel with 16 Amp Class - K Fuses.

X= _____

Y= _____

HÖRMANN
 117 STARPOINTE BOULEVARD
 BURGETTSTOWN, PA 15021-9506
 PH: +1 (800) 365-3667 FAX: 724.385.9151
www.hormann.us

HIGH PERFORMANCE DOOR SPECIFICATIONS

MODEL: SPEED-MASTER 2600 L WITH 3 PHASE DISCONNECT

DRAWN: GJB DATE: 3-21-17