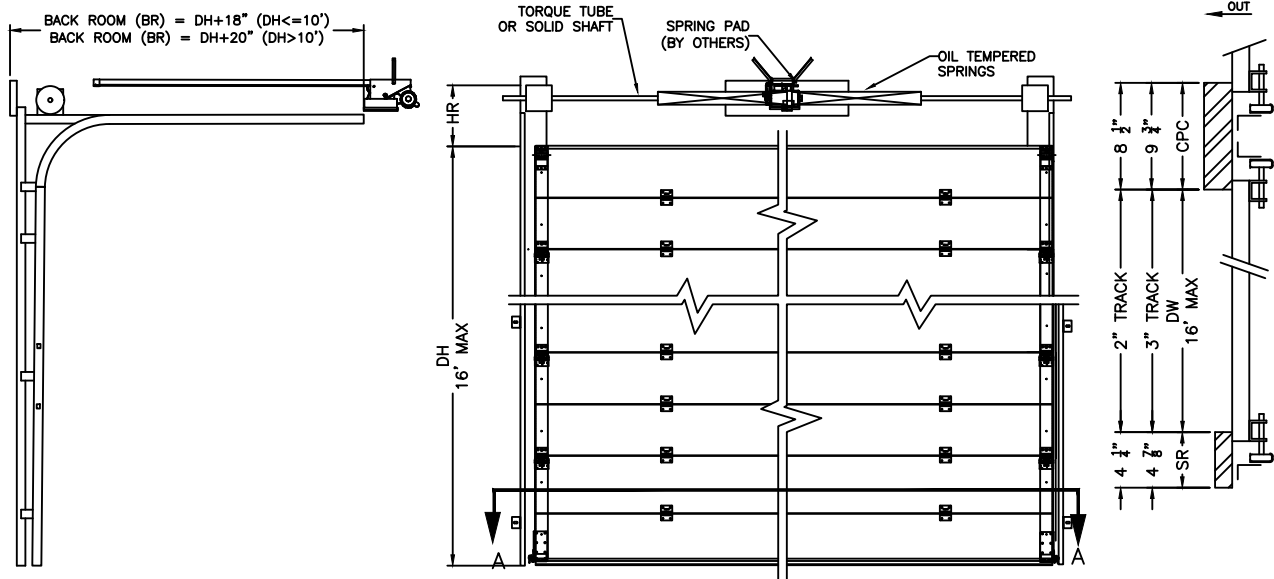


MODEL: SG5000LSS
 CUSTOMER: -
 ADDRESS: -
 CITY & STATE: -
 JOB: -
 LOCATION: -
 COMPANY: -

SIZE: DW= FT IN | DH= FT IN
 MOTOR LOCATION: CENTER
 CONTROL BOX LOCATION: RIGHT LEFT
 VOLTAGE: 120V 1PH 230V 1PH
 208V 3PH 230V 3PH 480V 3PH

VISION AREA:
 # OF VISION PANELS: - STARTING AT -"
 # OF PERFORATED PANELS: - STARTING AT -"
 OPTIONS:
 3 BUTTON PUSH STATION -

NOTES:



DH = DOOR HEIGHT
 DW = DOOR WIDTH
 CPC = CENTER POST CLEARANCE
 SR = SIDE ROOM
 HR = HEAD ROOM

SEC A-A
 ROTATED 90°

HEADROOM (HR)			
DH	DRUM TYPE	HR	
		2" TRACK	3" TRACK
≤ 12'	4" DIA	15"	16"
> 12'	5-1/4" DIA	16-1/2"	17-1/2"

ALL DIMENSIONS ARE IN INCHES.
 *NECESSARY SPACE REQUIREMENT FOR MAINTENANCE.
 **USE THIS DIMENSION ONLY WHEN DH IS GREATER THAN 197"
 CONTROL BOX PROJECTION IS 6 INCHES.
 DRAWING SHOWN RIGHT HAND, LEFT HAND OPPOSITE.

WE RESERVE THE RIGHT TO CHANGE SPECIFICATIONS WITHOUT NOTICE

	HÖRMANN FLEXON LLC STARPOINTE BUSINESS PARK 117 STARPOINTE BOULEVARD BURGETTSTOWN, PA 15021-9506 PH: 724.385.9150 FAX: 724.385.9151 www.hormann-flexon.com		
	TITLE: HIGH PERFORMANCE DOOR SPECIFICATIONS		
	MODEL: SG5000LSS	PART #:	-
	DRAWING #:	-	PAPER SIZE: ANSI "B"
PAGE: 1 OF 1	SCALE: N/A		
QTY: -	ENGINEER: ESP	DRAWN: 7/19/2017	