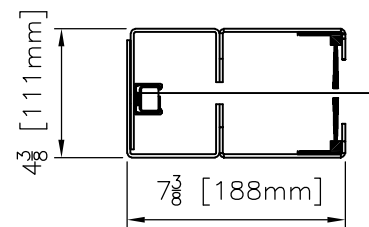


MODEL: SM1600 L _19 NO HOOD
 CUSTOMER: -
 ADDRESS: -
 CITY & STATE: -
 JOB: -
 LOCATION: -
 COMPANY: -

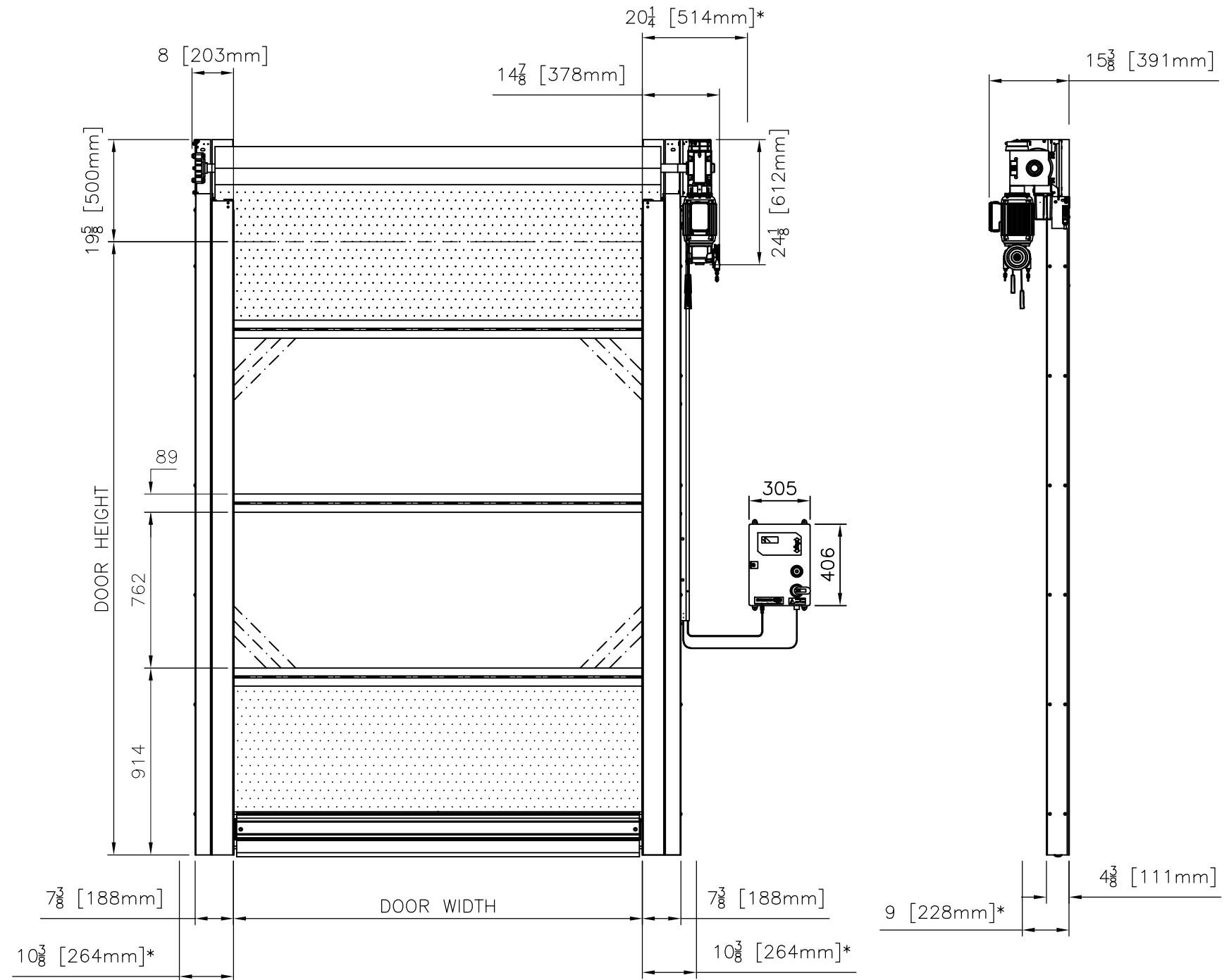
SIZE: DW= - DH= -
 MOTOR LOCATION: RIGHT LEFT
 CONTROL BOX LOCATION: RIGHT LEFT
 CONTROL BOX TYPE: 1PHASE 3PHASE
 VOLTAGE: 208V 230-240V 480V 1575V
 WIRING: NXT
 PANEL COLOR: BLUE ORANGE BLACK
 GREY
 VISION AREA: CLEAR PVC NONE
 OPTIONS:
 1 BUTTON PUSH STATION -
 INDUCTION LOOP SYSTEM -
 RADAR MOTION SENSOR -

NOTES:

1.) STEP DOWN TRANSFORMER SUPPLIED FOR VOLTAGES OVER 480VAC.



TRACK DETAIL
4:1



ALL DIMENSIONS ARE IN INCHES.
 * NECESSARY SPACE REQUIREMENT FOR MAINTENANCE.
 CONTROL BOX PROJECTION IS 6 INCHES.
 DRAWING SHOWN RIGHT HAND, LEFT HAND OPPOSITE.

*NOTE: GEARBOX HEATER WITH DEDICATED 110VAC
 POWER SOURCE REQUIRED FOR APPLICATIONS < 40°F

WE RESERVE THE RIGHT TO CHANGE SPECIFICATIONS WITHOUT NOTICE

HÖRMANN

117 STARPOINTE BOULEVARD
 BURGETTSTOWN, PA 15021-9506
 PH: +1 (800) 365-3667 FAX: 724.385.9151
 www.hormann.us

TITLE: SM1600 L _19 NO HOOD		
MODEL: SM1600 L _19	PART #:	
DRAWING #:	PAPER SIZE:	
PAGE:	SCALE:	
QTY:	ENGINEER: GJB	DRAWN: 12/19/2019